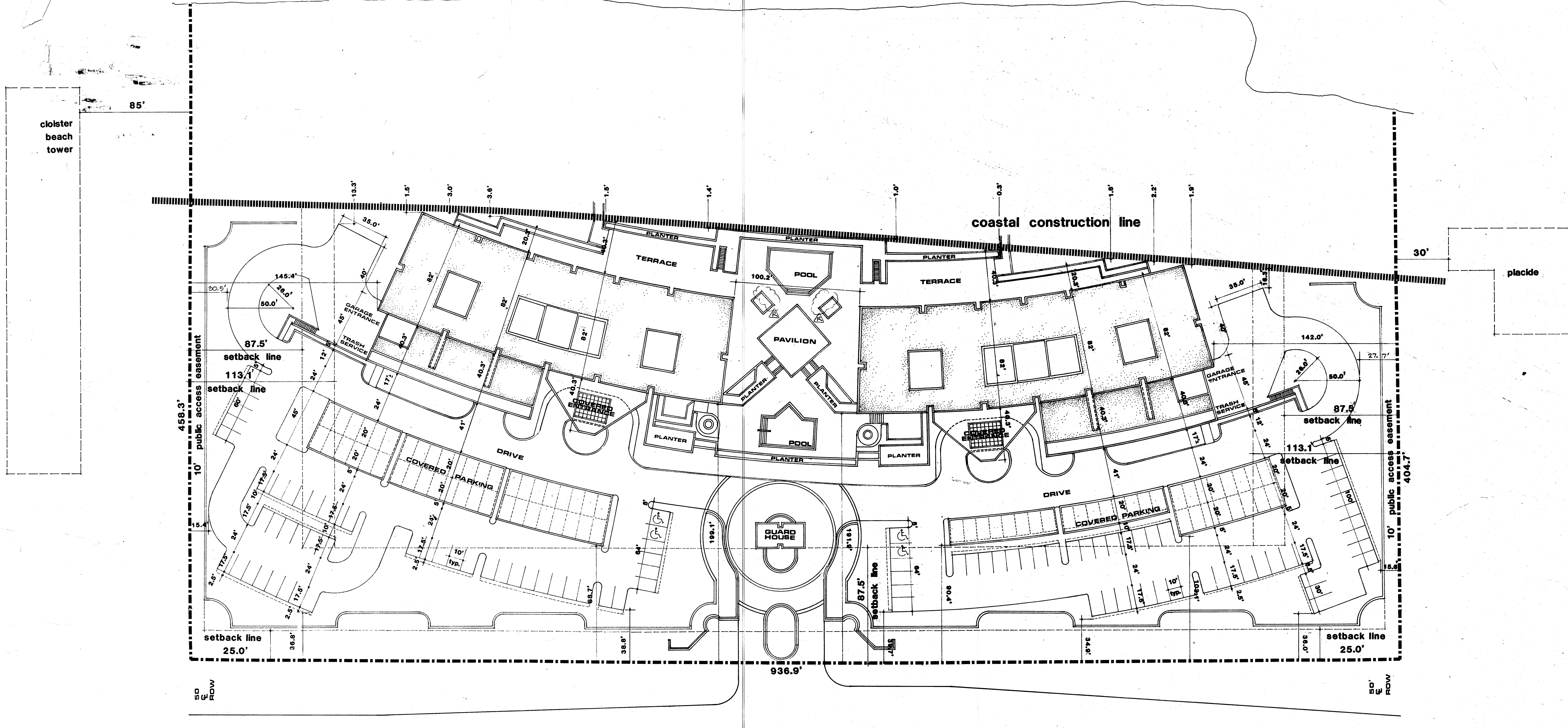


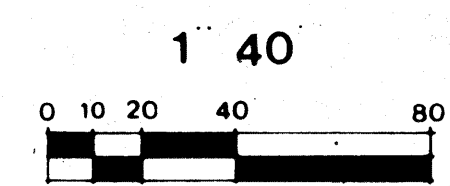
atlantic ocean



ARVIDA CORPORATION

site plan

development data



ADJACENT AREA INFORMATION NAME: CLOISTER BEACH TOWER PLACIDE ZONING: R-5A R-5A COMPREHENSIVE PLAN DESIGNATION: RH RH DENSITY: 54.7 D.U./ACRE 15.4 D.U./ACRE			ACREAGE: 10.67 (464,785 SQ. FT.) ZONING: R-5A COMPREHENSIVE PLAN DESIGNATION: RH RESIDENTIAL HIGH DENSITY PROPOSED HEIGHT: 87.5 FT. BUILDING SETBACK: 87.5 FT.
DENSITY: 16.9 D.U./ACRE ALLOWABLE: 213 D.U. AT 10.67 ACRES = 20.0 D.U./ACRE PROPOSED: 356 (INCLUDING 256 COVERED SPACES) REQUIRED: 315 (AT 1.75 SPACES/D.U.)	WEST (25 FT. MINIMUM LANDSCAPING): 87.5 FT. EAST: CCL MINIMUM (118,550 SQ. FT.): 15% (22,849 SQ. FT.) PROVIDED: MINIMUM (23,610 SQ. FT.)		
PARKING: TOTAL OPEN SPACE: PARKING LANDSCAPE AREAS:	NOTES: ALL PARKING AREAS SHALL HAVE CONCRETE CURBS VEHICLE STORAGE AREAS SHALL BE PROVIDED AT ENTRY AND ALL DRIVEWAYS TO CONFORM TO SECTION 7.01 LANDSCAPING IRRIGATION SYSTEM SUPPLIED FROM CITY WATER TYPICAL PARKING SPACE 10 FT. X 20 FT. HANDICAPPED PARKING SPACE 12 FT. X 20 FT.		



SCHWAB & TWITTY ARCHITECTS, INC.
 340 ROYAL PALM WAY
 PALM BEACH, FLORIDA
 33480 305/832-5599

THE ADDISON

"Old Cabana Club Site" Boca Raton, Florida

DATE: 7-15-03
 DRAWN BY: 4-23-03
 REVISED: 8-4-03
 8-26-03

COMM NO.
A 1.11